

Z
A
D
A
R

Z
E
M
U
N
I
K

C
R
O
A
T
I
A

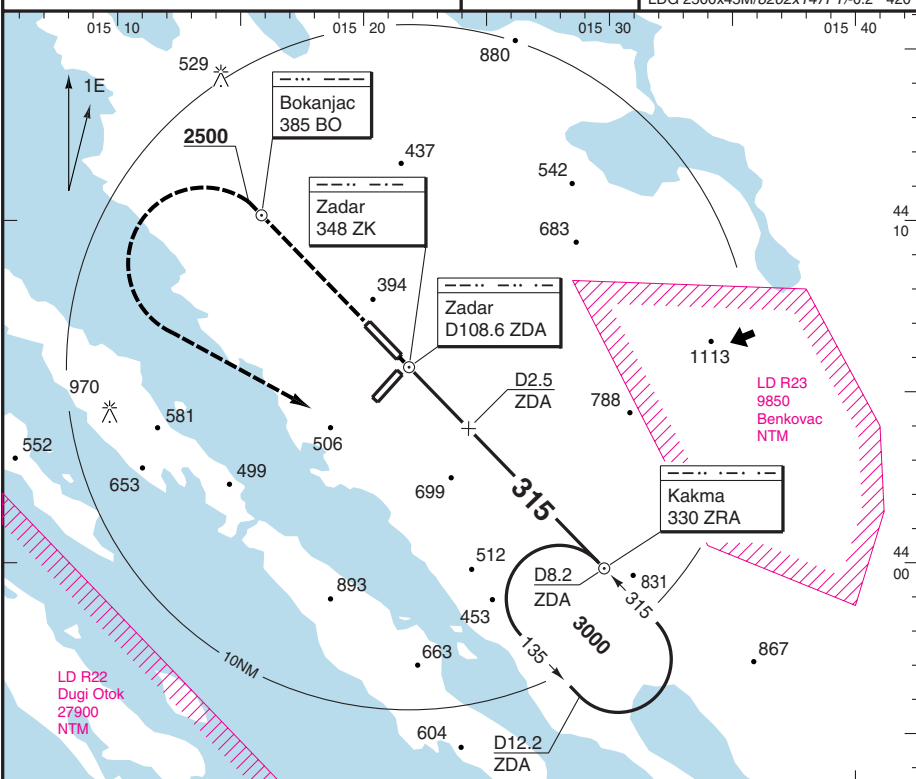
ZAD - LDZD **7** 12 OCT 05

NDB - 32

NEW PANS - OPS

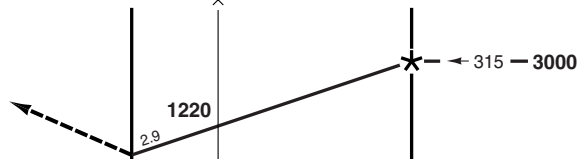
Zadar
APP 118.600 119.600 06-20
TWR 123.700

PAPI 3.00
LDG 2500x45M/8202x147FT/0.2 420



MAPt ZK ZK D2.5 ZDA ZRA TA 9500

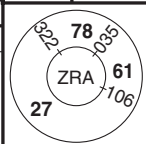
Climb on 315°. At 2500 turn left to 330 ZRA climbing to 3000 and hold.



NM 8 7 6 5 4 3 2 1 0 1 2 3 4 5 6 7 8 9 10 11 12 13 14 15 16 NM

2NDB+DME: ROD 90KT 480 100KT 530 120KT 630 140KT 740 160KT 840
2NDB: ROD

ZDA	3.0° ALT	JAA	2NDB+DME			2NDB			To obtain RVR multiply VIS by:	
D8.2	- 3000	ACFT	B	C	D	B	C	D		
D6	- 2320	MIN	640 (381)			950 (691)			Day 1.5	Night 2.0
D5	- 2010	RVR-KM	1.3	1.4	1.6	1.5	1.8	2.0		
D4	- 1700	APL U/S	1.5	1.8	2.0	1.5	2.0	2.0		
D3	- 1380									
D2	- 1070									
D1	- 750									



© European Aeronautical Group - 1d2d071basq0

THR ELEV 259 FT/AD ELEV 289 FT Change: Renumbered, APP, OBST